

**From:** [Wiechman, Lief](#)  
**To:** [Hollar, Kathy](#)  
**Subject:** Re: Draft PPT for our 10:00  
**Date:** Friday, January 09, 2015 2:20:45 PM  
**Attachments:** [Conservation Efforts Database for Jan 2015 Lakewood CO \(LW edits\).pptx](#)

---

Attached with some edits - mainly typographical. Looks good - I'll have to add stuff to the slides where I take over.

LW

***Lief Wiechman***

Sage-grouse Ecologist  
U.S. Fish & Wildlife Service  
Mountain-Prairie Region  
Cell: 307.214.8426  
Office: 307.772.2374 x236  
[lief\\_wiechman@fws.gov](mailto:lief_wiechman@fws.gov)

On Thu, Jan 8, 2015 at 6:21 PM, Hollar, Kathy <[kathy\\_hollar@fws.gov](mailto:kathy_hollar@fws.gov)> wrote:

Hey Lief, here's a draft for your review.....Let's discuss before you start making edits....I want to bounce something off of you.

And....Kate's sharepoint site has been down all afternoon and I failed to download her draft worksheet yesterday. Ugh. I'll get up early and try to crank it out before our 10:00 call.

Can we chat at 8:00am my time? I send a calendar invite.

*Kathy Hollar*

503-231-6156 office  
503-961-3993 cell



# Conservation Efforts Database

FWS Status Review Team Meeting  
January 2015  
Lakewood CO

Kathy Hollar  
Lief Wiechman



# Today's Agenda

- CED Overview
- What did we ask for?
- What have we received so far?
- What are we going to do with it?
- How can you help?

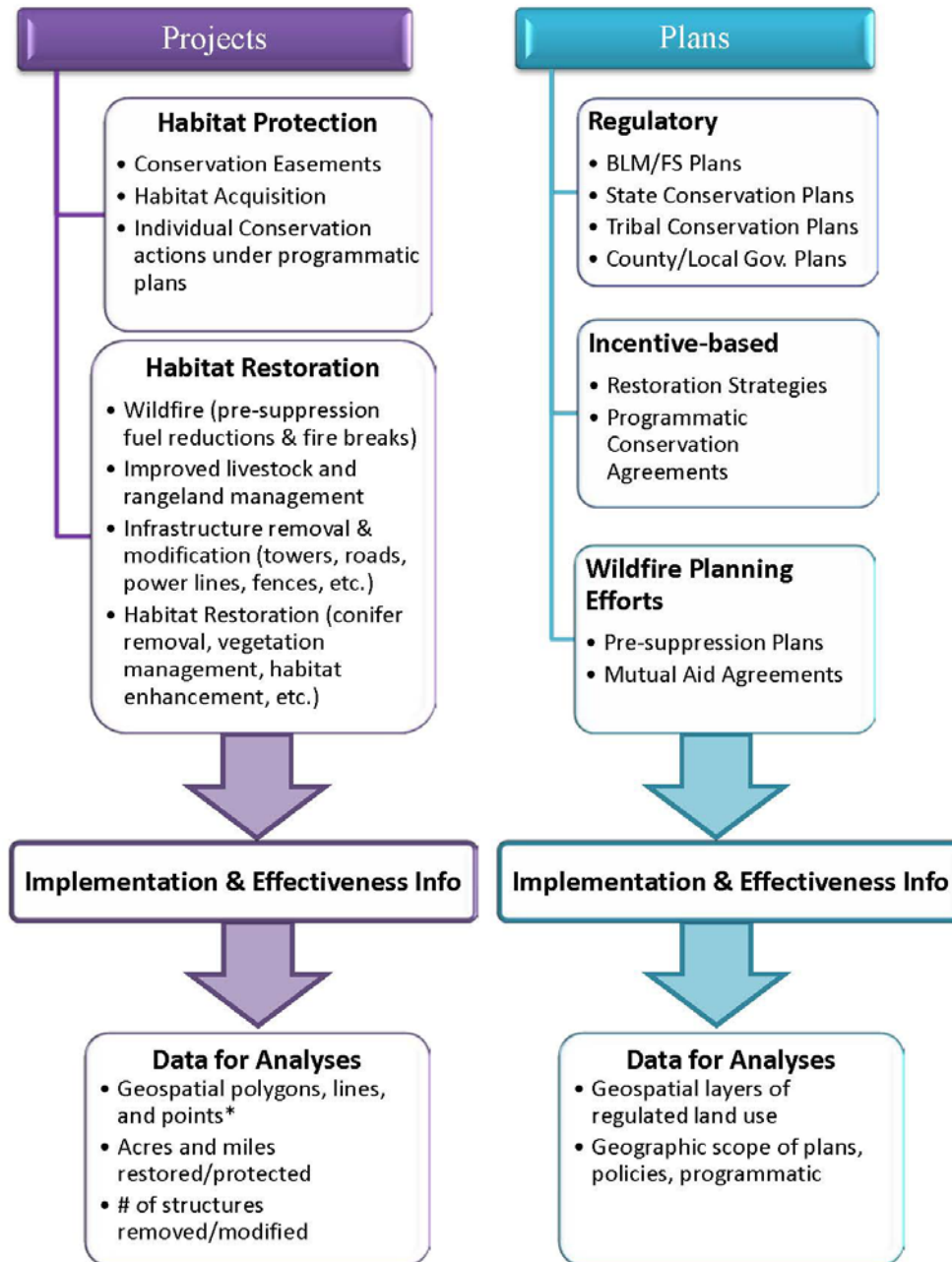


# CED Overview – What is it?

- Web-based, geospatial
- Captures info from 2009 to present
- Conservation plans & individual projects, tabular data from large data sets, spatial data, and documentation of the data sources
- Housed on the data sharing platform, LC Map (aka ScienceBase)



## Conservation Efforts



\* geospatial data will be buffered to protect personally identifiable information

# CED – What did we ask for?

Plans: Threat-specific records for each threat addressed in regulatory plans

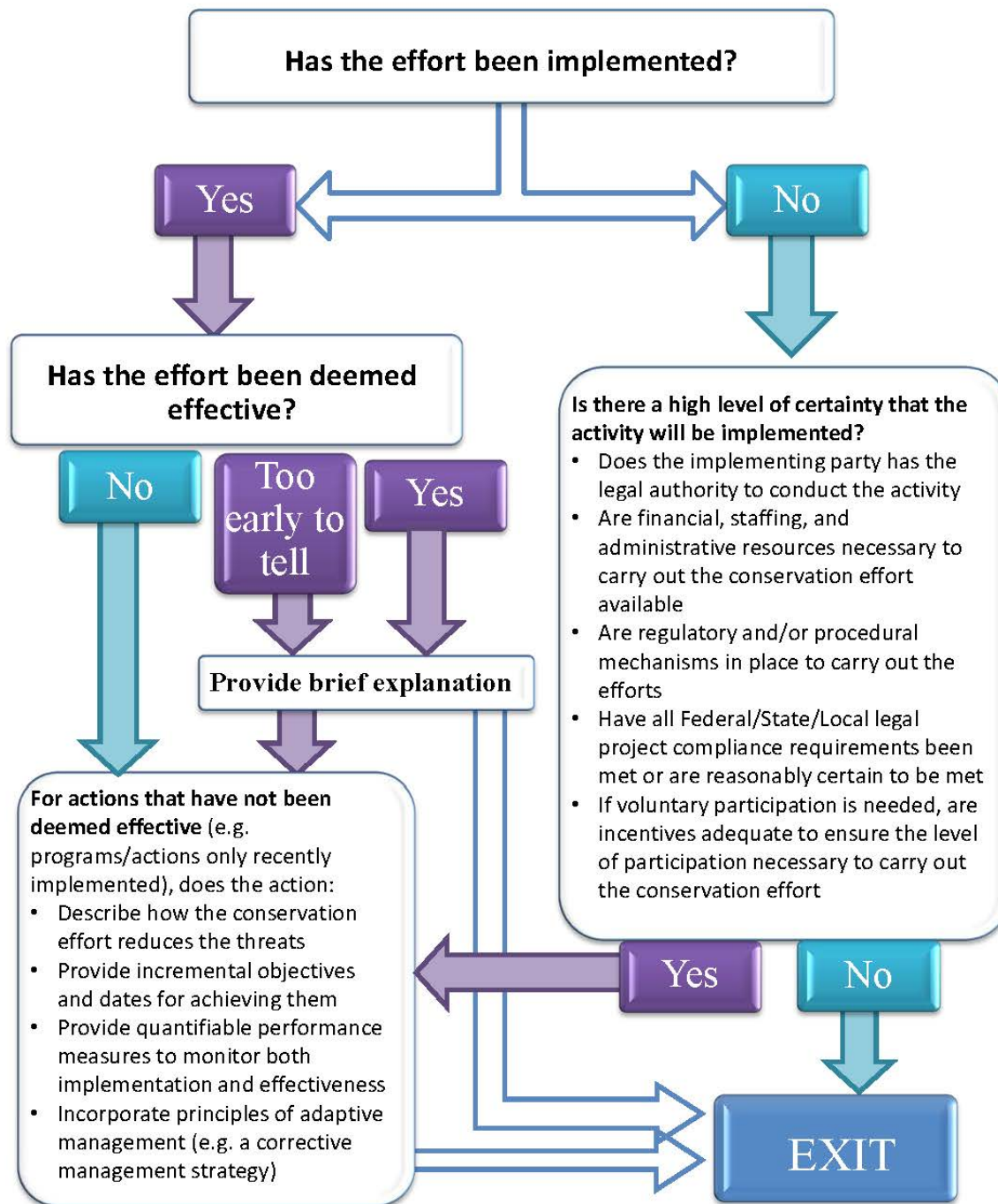
- Summarize how the plan addresses the suggested Conservation Objectives listed in the COT Report
- Summarize policies/regulations/ordinances to prevent/minimize/ameliorate the threat
- Upload relevant documents supporting the summary information
- Summarize funding source(s) and funding plan
- Describe any obstacles and/or successes to fully implement the plan
- Describe implementation plan for the next five years
- Describe plans for monitoring effectiveness
- Include any additional information needed to describe the plan

# CED - What did we ask for?

Projects: 11 Types of “Activities” to capture metrics on:

- Acres of habitat (including but not limited to):
  - In Conservation Easements
  - Restored (wildfire/ oil & gas reclamation efforts)
  - Conifers Removed
  - Fuels Management / Fire Breaks
- Number of:
  - Structures removed (wind turbines, comm towers, other)
  - Translocation actions and number of birds moved in each action
- Miles of:
  - Linear structures removed (roads and powerlines)
  - Fence marked/ modified
  - Power lines buried / retrofitted
  - Roads closed or decommissioned to improve rangeland health
  - Road and trail closures / trails rerouted







# CED – The Invitation Process

- Multiple discussions/presentations at RISC Team, SGTF, and EOC meetings
- Data Call Letter sent in August 2014
- Approximately 12 Webinars
- Targeted Outreach by Field and 'Reminder' Outreach in December 2014
- 120+ Registered Users for individual project entry
- 10 Batch Uploads

# CED - Who Came to the Party? ?

## The Feds:

- BLM
- USFS
- NRCS (almost there)
- FSA (no response)
- DoD - Yakima Training Center, WA
- BIA – Wind River Agency
- FWS – Refuges and Partners Program

# CED - Who Came to the Party? ?

## The States:

- California
  - Fish and Wildlife
- Colorado
  - Parks & Wildlife
- Idaho
  - Department of Lands
  - Fish & Game
- Montana
  - Fish, Wildlife & Parks
- North Dakota
  - Game & Fish
- South Dakota
  - Game, Fish, and Parks
- Nevada
  - Southern NV Water Authority
  - Department of Wildlife
- Oregon
  - Department of State Lands
  - Fish and Wildlife
  - Watershed Enhancement Board
- Utah
  - Department of Natural Resources
- Wyoming
  - Game & Fish

# CED - Who Came to the Party? ?

- NGOs: American Colloid Co, Chesapeake Energy Co, Hayden-Wing Assoc, Rocky Mountain Power, SWCA Env Consultants, Two Birds – One Stone, Thunder Basin Grasslands Prairie Ecosystem Assoc
- SWCDs: Harney, Baker OR
- Counties: zero
- Local Working Groups: zero
- Tribes: zero

# CED - What did we Get?

- Individual Records: 274
- Batch Uploads:
  - BLM 4,000+ efforts
  - Wyoming 450+ efforts
  - Utah 400+ efforts
  - Partners Program 300 efforts
  - USFS 80 efforts
  - OWEB, ID Dept of Lands xxx efforts
- NRCS – summary info only on it's way ???

7,000 ? Efforts

.....so far



# CED – What will do with this info?

- Use in models (Oil & Gas, Ag Conversion, Fire, Conifer Encroachment)
- Use in Mid-Range Analyses (simple overlays of threat, species location, and conservation efforts)
- Use in Qualitative Narratives (summary totals, e.g. # of efforts/acres in total population)

# CED - How can you help?

- Register in the CED!!!
- Run queries.
- Review the Effort Map.
- Review State/Population reports and look for obvious gaps – are you aware of significant conservation efforts that haven't been captured in the CED? Call your Partners!



# CED - How can you help?

- Most importantly.....Participate in the 12-step Program for Reviewing Effectiveness and Implementation Info – Take it away Lief.....

